

MONTHLY MEMBERSHIP PROGRESS REPORT

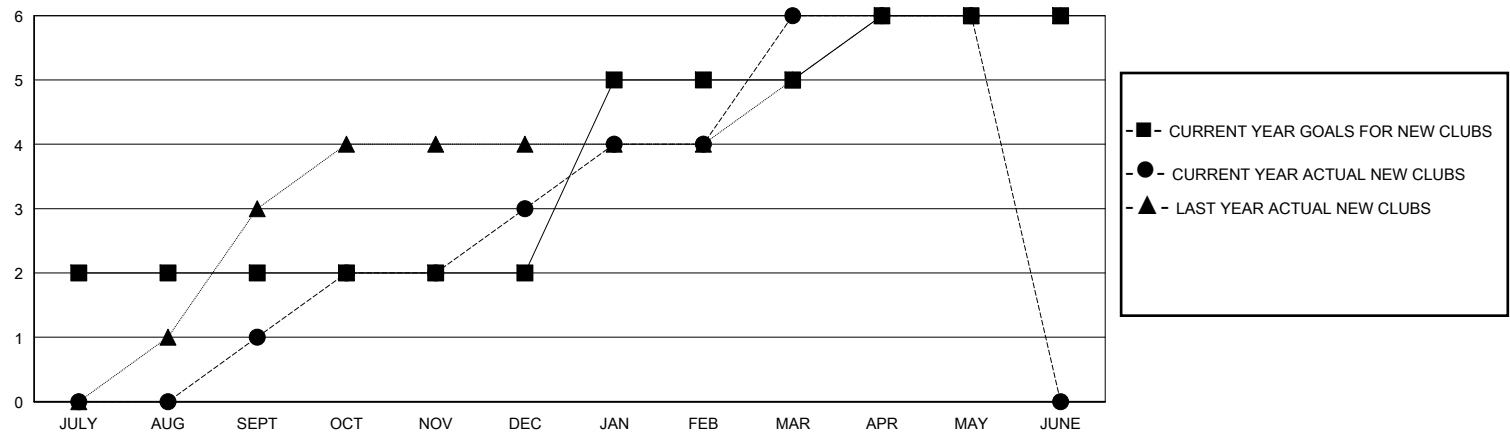
District 317 D

Results as of: 5/31/2025

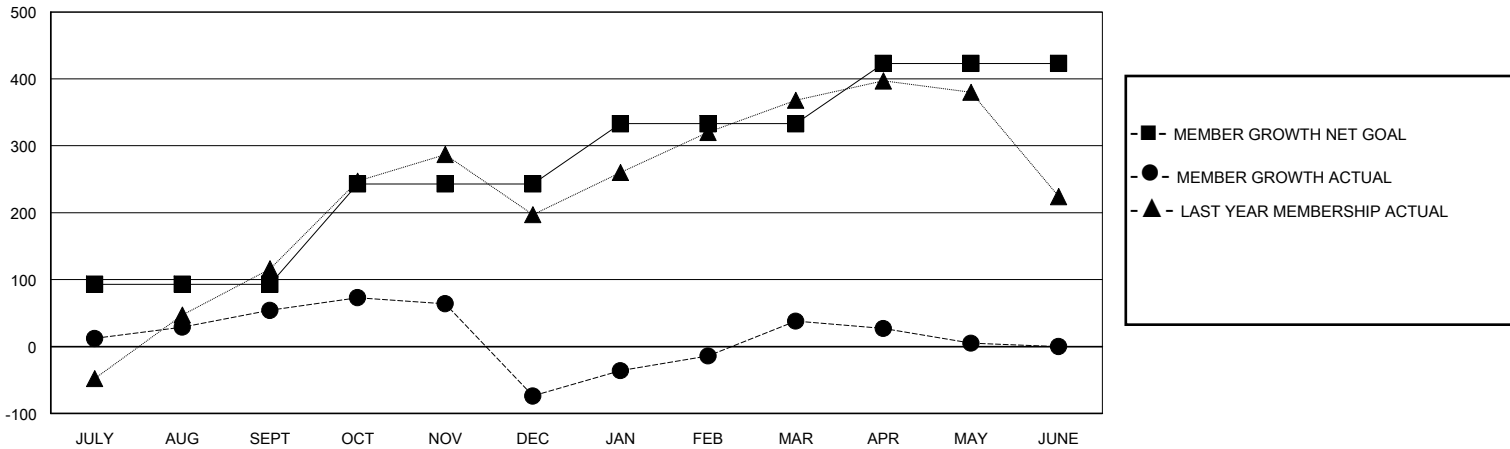
GMT: LOCATION INDIA GMT CA

| Clubs | | | | Members | | | |
|-----------------------|---------------|-----------|---------------|-----------------------|------------------------|----------------------|--|
| RESULTS FOR 2024-2025 | | | | RESULTS FOR 2024-2025 | | | |
| QUARTER | NEW CLUB GOAL | NEW CLUBS | DROPPED CLUBS | QUARTER | MEMBER GROWTH NET GOAL | MEMBER GROWTH ACTUAL | DROPPED MEMBERS ACTUAL (including transfers) |
| JULY/AUG/SEPT | 2 | 1 | 0 | JULY/AUG/SEPT | 93 | 134 | 70 |
| OCT/NOV/DEC | 0 | 2 | 3 | OCT/NOV/DEC | 150 | 126 | 243 |
| JAN/FEB/MAR | 3 | 3 | 1 | JAN/FEB/MAR | 90 | 181 | 60 |
| APR/MAY/JUNE | 1 | 0 | 1 | APR/MAY/JUNE | 90 | 60 | 83 |

GOALS AND ACTUAL NEW CLUBS CUMULATIVE



GOALS AND ACTUAL MEMBERS CUMULATIVE



| | | | | |
|------------------------|-----|---|-------------------------------------|----------------|
| DROPPED CLUBS: 5 | | 88 CLUBS OF 125 ADDED 1 OR MORE NEW MEMBERS | <u>GENDER DISTRIBUTION</u> | |
| | | | MALE | 3,451 (74.75%) |
| | | | FEMALE | 1,166 (25.25%) |
| <u>DROPPED MEMBERS</u> | | CLICK HERE FOR CUMULATIVE MEMBERSHIP DATA | | |
| DECEASED | 17 | | TOTAL FAMILY UNIT MEMBERS 1,672 | |
| CLUB CANCELLED | 54 | | | |
| OTHER | 383 | | FAMILY MEMBERS PAYING HALF DUES 860 | |
| TOTAL | 454 | | | |